

LIMITS AND CONTINUITY #1

For questions 1 and 2, use the graph of the functions f and g below.

1. Evaluate each of the following limits:

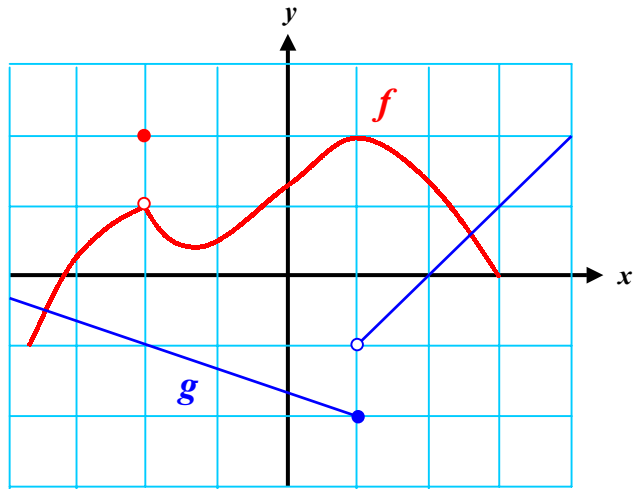
(a) $\lim_{x \rightarrow -2} [3f(x) - 2g(x)]$

(b) $\lim_{x \rightarrow -3.5} [f(x)g(x)^2]$

(c) $\lim_{x \rightarrow 1} \frac{f(x)}{g(x)}$

(d) $\lim_{x \rightarrow 2} [f(x) + g(x)]$

(e) $\lim_{x \rightarrow 3} [f(g(x))]$



2. Discuss the continuity of the graphs at $x = -2$, 0 , and 1 .